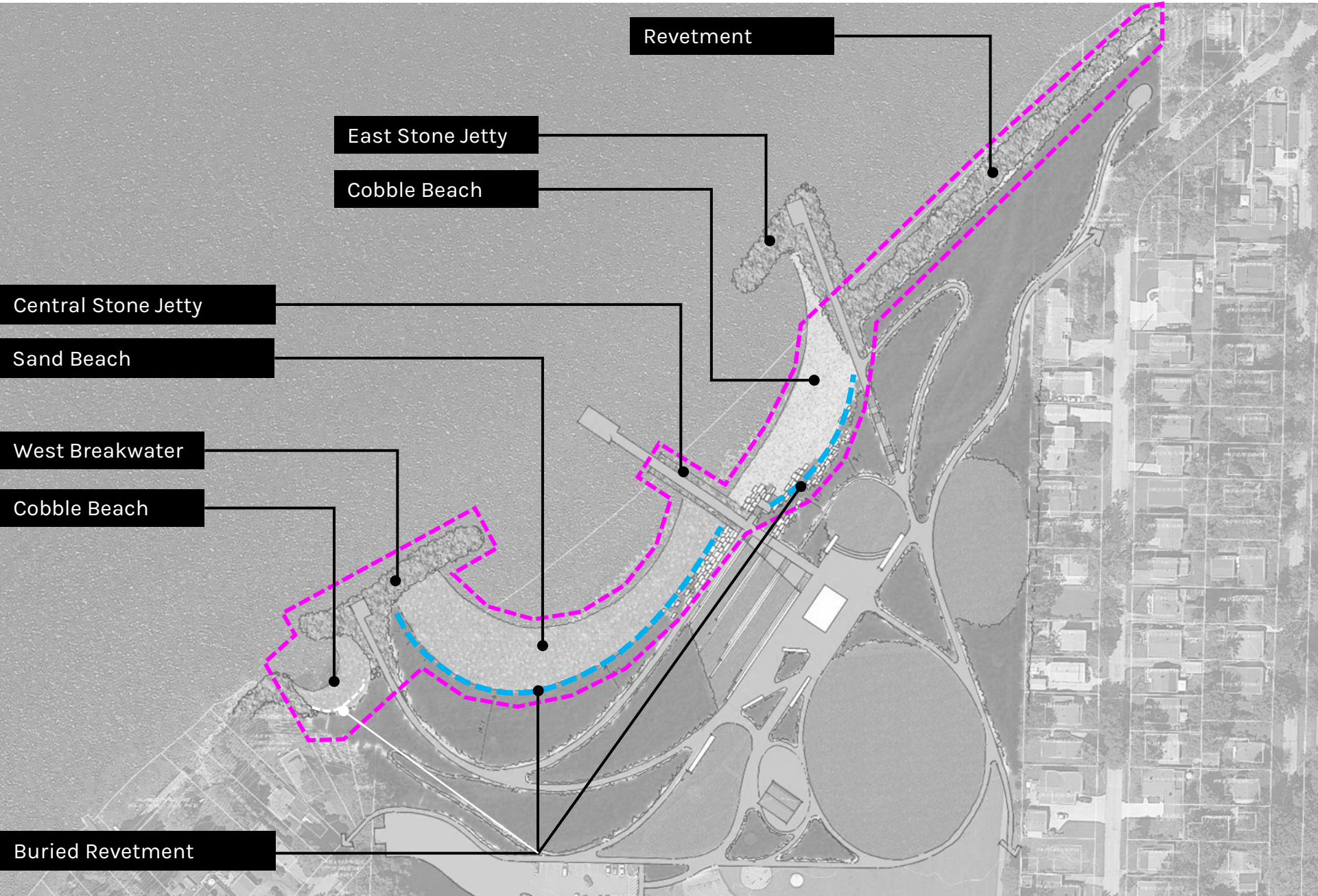


ADVANCING THE MASTER PLAN

STEP ONE

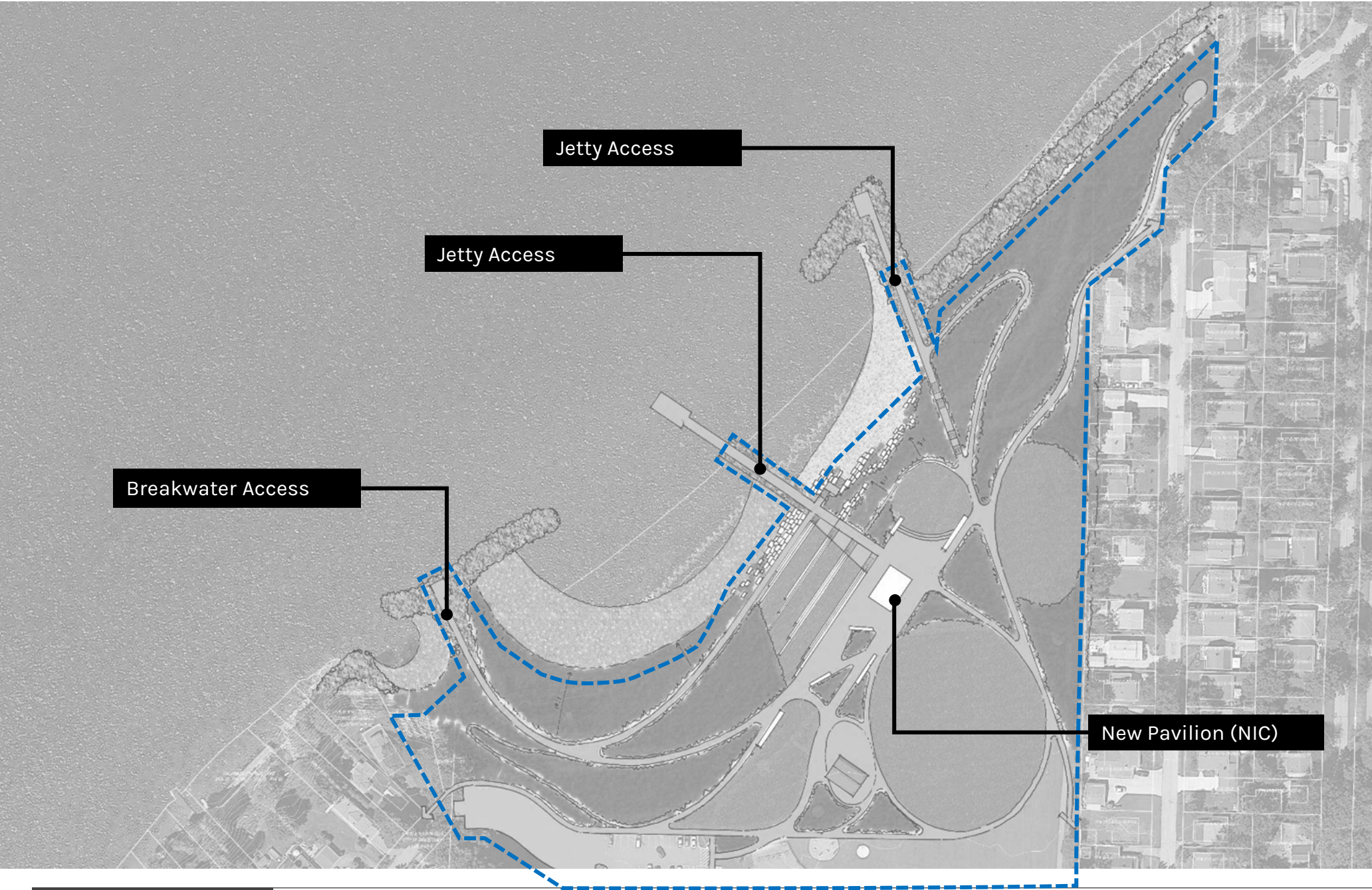


EEAG PROJECT

1. Bathymetric survey and upland survey (including riparian interests, OHWM, natural shoreline) completed by others (City-funded).
2. Schematic Design, Design Development, and partial Construction Documents for coastal structures to mitigate coastal erosion (EEAG-funded).
3. EEAG Project advances design of coastal erosion improvements including breakwaters, revetments, central jetty and beaches (with buried revetments in the back beach area). Future investments can be made to extend east jetty and central pier if desired.
4. EEAG Coastal Improvements extended into upland at a consistent slope to work with existing conditions.
5. Bid Documents and coastal permits are a future project.

ADVANCING THE MASTER PLAN

STEP TWO

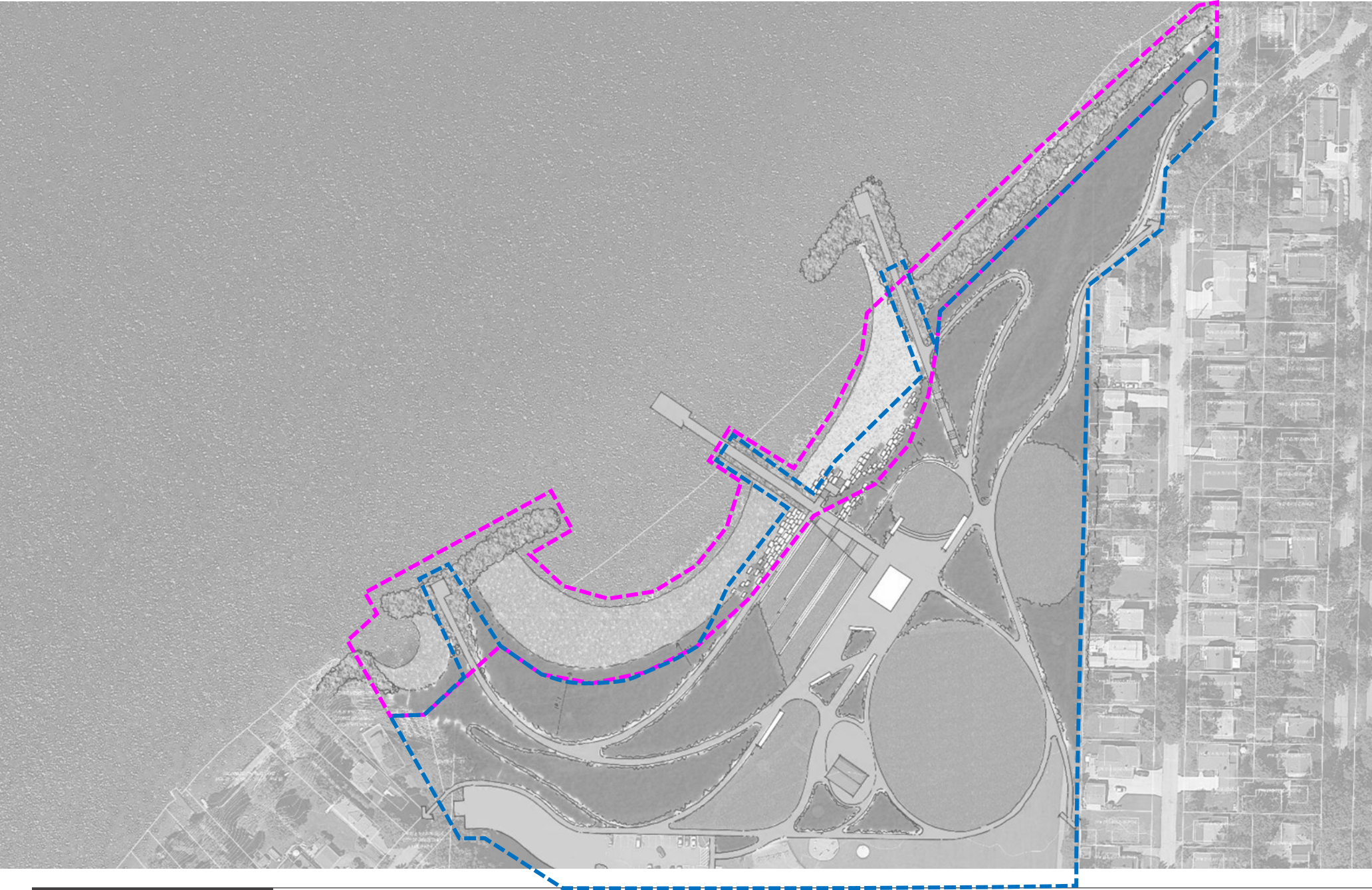


UPLAND IMPROVEMENTS

1. Anticipated upland improvements (excluding building) are designed to a Schematic Design / Design Development level to ensure future phase improvements are not hamstrung by early-phase improvements.
2. Submit for Coastal Management Assistance Grant and other grant funding to support MP implementation
3. Bid Documents and coastal permits are a future project.

ADVANCING THE MASTER PLAN

STEP THREE



UPLAND IMPROVEMENTS

1. Construction phasing determined by City and permitting roadmap.
2. Bid-ready documents created for initial phase construction (coastal + early phase upland, if applicable) and coastal permits.
3. Future projects and funding TBD.